

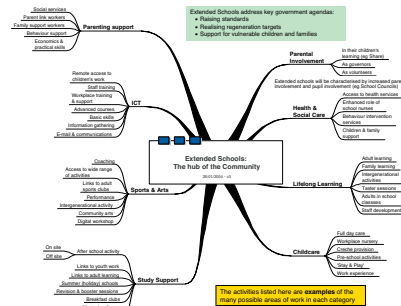
What does Sherford offer?

Apart from a chance to get it right... and set a standard that other sites have to perform to:

- 5,000 plus homes;
- A substantial proportion of which will be genuinely affordable;
- Vibrant High Street with food store, pubs, restaurants, clubs, cultural performance space and neighbourhoods with play areas and public space that is safe and where people stroll and meet;
- A place where people work and live;
- Local community governance buildings, a town hall, library and information centre, police facility and church;
- Health centre with GP surgeries and children's centre;
- 1 secondary school, 3 primary schools, day care nursery;
- Open space, both alongside the town in the Community Park and integral to it in public space and facilities that:
 - enhance ecological conservation (green gyms);
 - create educational opportunity (Forest School, Organic Farm, Adventure & Survival centre, Scouts & Guides);
 - enhance local production (allotments, Organic Farm, Farmer Markets); and
 - employment opportunities (Community Trust, Organic Farm, recycling centre).
- Extensive sports facilities including playing fields, tennis courts, all-weather and floodlit pitches, swimming pool;
- Encourage active recreational use including in the Sherford Quarry, Parours / trim trails, cycleways and footpaths integrated into local networks, managed parkland and dog walking areas;
- Stand alone Youth Centre on the quarry edge with alcohol free youth bar and connection to skate park, adventure sports associated with the quarry;
- A Park & Ride site that attracts traffic off the A38 and residents of Sherford onto a high quality bus service taking them to Plymouth City Centre, Langan, Derriford and engages with the communities on its route; and
- A local hopper bus service that makes sure all that Sherford has to offer is easily available to all the communities neighbouring Sherford and allows residents of Sherford to visit its neighbours by foot, cycle or public transport.

Approximate Land Use Budget

Land Use	Approximate Hectares
Community Park	207
Residential	136
Open spaces and Sports Facilities (NEAPs, LEAPs, LAPs, Green corridors, pitches)	26
Commercial / Employment / Retail	18
Secondary School and playing fields	8
Quarry and woodlands	7
3 Primary Schools	6
Park and Ride	2.5
Health Centre	2.5
Other community uses	2



Extended school diagram

COMMUNITY TRUST

To give the opportunity for a balanced and sustainable community the best chance of turning into a reality, we will be creating the vehicle to allow the community to manage its own assets, govern itself and encourage the development of a binding social fabric. Every member of the new community will have a stake in it.

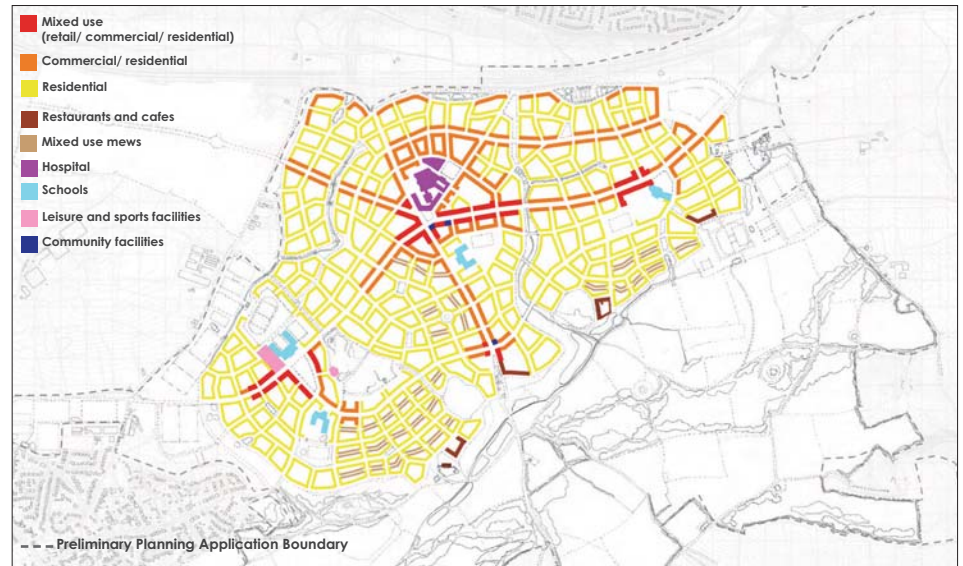
The aim is to create a community based organisation that will have at its heart the promotion of the wellbeing of its residents and the wider community. It is envisaged that a Community Trust will eventually take on the responsibility for certain assets within Sherford and manage, maintain and develop them over time in the community's interest. These assets could include:

- community park;
- community supported agricultural enterprises;
- allotments;
- sports and play facilities;
- café in the park;
- energy services infrastructure;
- public open space within the urban area;
- car sharing club;
- low cost work and retail space;
- neighbourhood centres; and
- community intranet (for the provision of information and communication).

It is envisaged that the Trust will also employ staff to promote more sustainable and healthy lifestyles, addressing issues such as, personal travel plans, waste minimisation and recycling, raising the awareness of local food, engendering civic pride and community involvement.



What does Sherford offer? The proposed facilities



Sherford: Broad designation of land use plan



Poundbury: the factory built first followed by houses opposite

SHERFORD



PUBLIC EXHIBITION



'98.4% of all houses are built by plc housebuilders who seldom own all of the land'



SHERFORD



PUBLIC EXHIBITION



It is a shame that we have such a fractured society and have planned badly enough not to have enough housing stock in this country. It is a shame that what we have

produced in the last 50 years or so mostly adds to the problem. If we need housing then lets at least give it the best chance of being a beautiful, desirable, distinctive

and lasting place with a heart and a conscience. Let's try to create something that we are all together proud of. **PLEASE STAY INVOLVED AND HELP US ACHIEVE THIS.**

SHERFORD



PUBLIC EXHIBITION



WHAT SHERFORD WILL BE



SHERFORD



PUBLIC EXHIBITION