

Neighbourhoods need centres

Towns, villages, neighbourhoods all need a central place where life is at its busiest because it is where most things are and where people want to be. It will be different for a local neighbourhood than for the centre of a town, but the principle is the same.

Traditionally those centres were High Streets or squares and greens, often at their most intense at a crossroads. They are fundamental, yet we've forgotten this in recent years. Sherford proposes to bring them back.

We have designed a new High Street that joins the three neighbourhoods. As you'd expect, the High Street will be where a lot of the mixed use (for example employment, retail) is located. But some people also like to live on these lively streets. The buses will run along the High Street and a lot of local streets connect to it to make it accessible to the rest of the neighbourhoods. We are describing a modern version of many existing towns and villages in the South Hams tradition.

THE HIGH STREET NEEDS VISITORS

High Streets were always where local people and visitors came together. The passing trade helped those facilities survive for the benefit of local people. It was also the place where social and leisure facilities were located for the very same reason. The link from the A38 to the A379 will make a terrific contribution to the number of local facilities Sherford can support. As with any successful High Street, traffic has to be managed and tamed. But the benefits far outweigh the problems.

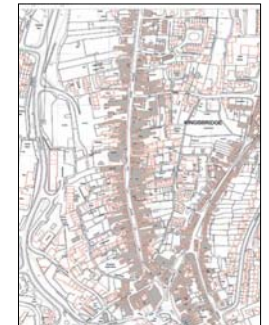


Sherford: a perspective of the proposed High Street

by Chris Draper, Architectural Illustrator



Kingsbridge High Street



Kingsbridge High Street



Sherford: proposed High Street



Totnes High Street



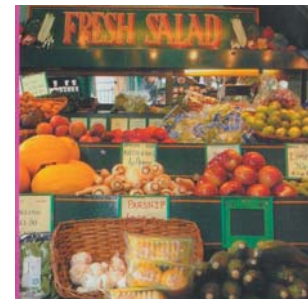
Modbury High Street



Sherford: proposed elevation for a new High Street



How not to do it



Thriving local economy



Kingsbridge High Street

SHERFORD



PUBLIC EXHIBITION